



Wateringbury Primary School NEWSLETTER

Friday 10th September

Hello!

And welcome to the start of a new academic year at Wateringbury CE Primary School. For those of you who were here last year, welcome back and for those who, like me, are new to the school we welcome you into the Wateringbury family.

I am so thrilled to be the new headteacher for your school. Already, I have been made to feel incredibly welcome and, despite not knowing many names yet, feel part of the team.

I am sure there have been some wobbles about school restarting in September, not just for the new reception parents, but for all of us with the lifting of a lot of the COVID measures from last year. Please be assured that the safety of our pupils, staff and families is paramount and there are still precautions that we are taking to ensure that we minimise any risk in school (see COVID information below). However, it is joyous to see the children playing together outside and worshipping together in the hall. We know how important these interactions are to the children's development, social skills and wellbeing so will be striving to keep these going.

Your children are a credit to you – they have settled into the new school year and the new routines brilliantly. They look smart in their uniforms and, this week, have been focussing really hard on showing us how beautiful their manners are. I have been so impressed with how calm and productive the classrooms are. Long may it continue.

I hope you and your families had a peaceful, enjoyable weekend. We have all enjoyed a rest after surviving the first full week back!

Miss D Johnson

Term Dates 2021/2022

Term 1: 2.9.21—21.10.21

Term 2: 1.11.21—17.12.21

Term 3: 5.1.22— 10.2.21

Term 4: 21.2.22—1.4.22

Term 5: 19.4.22—27.5.22

Term 6: 7.6.22—22.7.22

Learning, growing, achieving... Our journey together



Website:
www.wateringbury.kent.sch.uk



Contact:
01622 812 199



Email:
office@wateringbury.kent.sch.uk

Important information regarding Key Stage Two pick up at the end of the day.

★ From Monday, please could parents who are picking up their KS2 children from Phoenix Drive gate wait ON THE PLAYGROUND rather than down the path. It is important that teachers can see who the children are going home with and this is difficult when parents are waiting in different places.

★ Your child's teacher will NOT let them leave the site until they have seen the adult who is taking them home.

If your child is in Year 5 or Year 6, and you feel they are responsible enough to walk home alone, please complete a permission slip (which your child should have in their bag today) and return it to your class teacher. Children without this permission will not be able to leave the site unaccompanied.

★ We also ask that you ensure that your child knows who is picking them up each day and that you let the classteacher know if the arrangements are going to be different to normal.

★ I hope you can understand that these arrangements are to help ensure that your children can leave the school site safely. If these changes cause an issue for your family please speak to me or your classteacher about possible solutions.

Thank you for your support with this.



Unfortunately we have had significant Covid related disruption within our work force and in many of our supply chains. Therefore there will be delays in some of the orders:

Orders placed 2/8 – 13/8 will be delivered from the week beginning 13/9

Orders placed from 14/8 we estimate will be delivered from the week commencing 27/9

An update from our clothing supplier Brigade

Honeysuckle class NEED you!
Do you have any of the following items you could donate:
Wooden building blocks, milk crates, vegetable crates.
Please could you bring anything that is suitable to the office? Thank you!

This week our stars are:

Bramble- **Annabella Edwards** for being a fantastic role model and always displaying the correct behaviours for our new classmates

Honeysuckle- **Jamie King** for settling really well into the school year. Keep it up!

Foxglove- **Frankie Smith** for a super start to the year, and always giving his best even if it's a little tricky
Clover—**Sophia Ludford**— for being amazingly ready to learn, helpful and polite

Bluebell—**Leighton White** for being brave and going swimming and also for great attitude to back to school
Primrose—**Zac Eveleigh** for standing out to Mrs Blunden yesterday in the 11+, concentrating all day. She was very impressed!

[Drivers reminded about safety in new School Crossing Patrol campaign - KCC Media Hub](#)

A new campaign has been launched to remind drivers of their responsibilities to drive safely near School Crossing Patrols. Social media posts use the faces and stories of real patrollers whose job it is to ensure the safety of children and their parents and guardians as they get to and from school.

kccmediahub.net



caterlink
feeding the imagination

Caterlink, our kitchen service, is currently experiencing a lot of problems with registering new parents (ie Year 3) onto the online portal and taking payments for existing accounts.

We understand that some parents are still having problems, however this isn't the case for everyone. If you haven't done already, please email the office if you are having difficulty and we will look into them individually. Any new parents who wish to set up an account please contact the office for a letter personalised to your child with their unique code. Many thanks



Wateringbury Walk

Keeping with tradition, today we walked to Teston country park. The children behaved beautifully and enjoyed the chance to relax and play with their friends after a very busy first full week—AND we managed to avoid the rain!





Wateringbury CE Primary School

Return to School in September 2021

Beyond Step 4

This guidance is to let you know how we will be running in September. The government guidance about schools for parents can be found [here](#) (which contains a lot of links with advice for families). We will be following the DfE, government and local authority guidance, and adjusting our practice if there are updates from them. These plans may also need to be changed (possibly with very little notice) should there be a change in circumstances locally or nationally.

Planning for September involved a careful balancing act between keeping everyone in our school community safe whilst reducing the disruption to the children's education and social development and getting back to some sort of normality.

Attendance in school is compulsory now and we strongly advise against taking holidays in term time (this includes any quarantining time) – the children have missed enough learning over the past year or so.

Measures we are taking to keep the school safe:

Regular evaluation of our risk assessment as we move through the term and received updates from the government and other regulatory bodies.

Staff will still be testing twice weekly. This will be reviewed by the government at the end of September.

We will be cleaning more frequently, especially frequent touch points.

There will be good ventilation in the buildings whilst maintaining a comfortable temperature.

Regular handwashing and hand sanitiser available in all classrooms and shared areas.

Following the 'catch it, bin it, kill it' approach for coughs and sneezes.

Any child or member of staff who is unwell with coronavirus symptoms cannot come to school and should have a PCR test.

We will send home children who are showing symptoms to be tested.

Children who are isolating will have work set for them remotely.

If your child is eligible for free school meals, we can organise vouchers to be sent to you if your child has to isolate and is well enough to work.



What is going to be different?

Children will no longer need to be in bubbles. They will play altogether when outside at break and lunchtime.

If we can ventilate the hall well enough (i.e. it's not freezing cold) we will have whole school collective worship again.

During the pandemic, the desks were all facing forward. From September, teachers can organise their desks in groups if it is more suitable for the learning. Some of the children and teachers have actually enjoyed having rows for some elements of the curriculum!

Unless advised otherwise by the class teachers, PE kits need to be brought into school and kept on pegs rather than worn on PE days.

We are hoping to get our programme of extra-curricular clubs back up in a couple of weeks.

Dealing with symptoms and cases

If your child has COVID symptoms these must not come to school. We would strongly advise that you get a PCR test for them (NOT lateral flow tests – they are for asymptomatic testing). If this test is negative and your child is well enough they can return to school. We will send home children who present with symptoms in school and request that you get them tested.

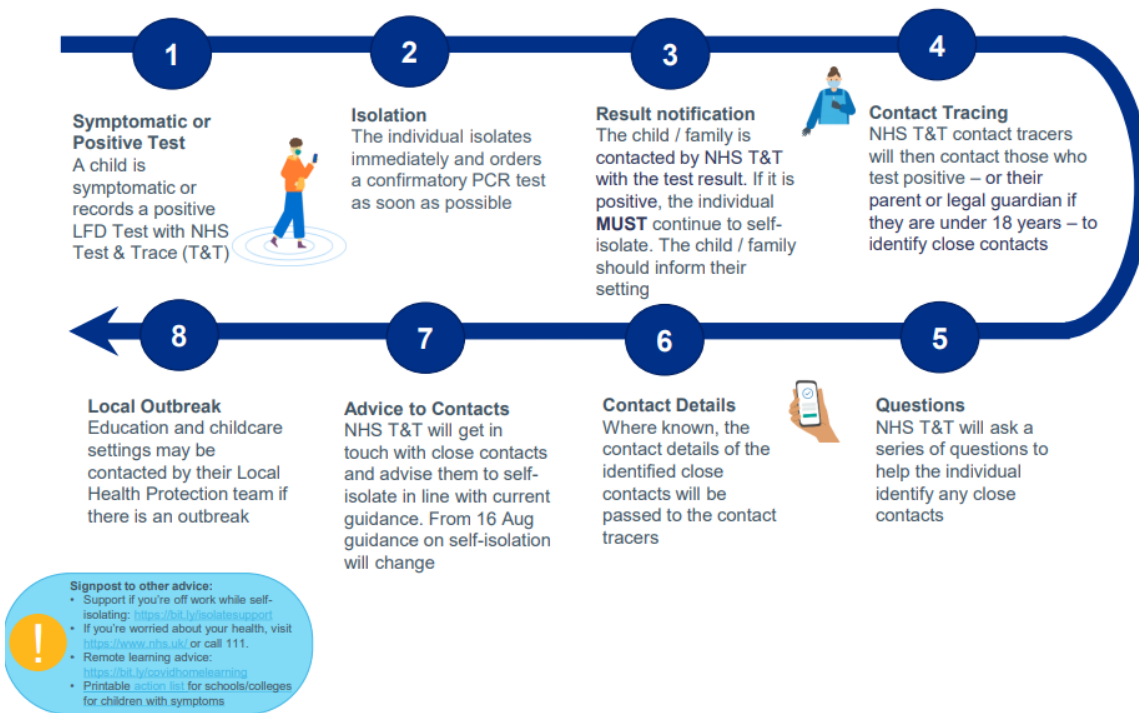
If your child is identified as a close contact to a positive case you need to follow the advice given to you by NHS track and trace and get a PCR test for your child. If your child then tests negative, they should come into school.

If your child tests positive for COVID your child must isolate as advised by NHS track and trace and you should follow their guidance regarding contacts. We would ask that you also let us know.

Contact Tracing Journey

For children and young people in education and childcare settings

IMPORTANT: If, at any point, a student, pupil or staff member begins displaying symptoms they must [follow government guidelines](#), order a PCR test and self-isolate.



Although we are not responsible for identifying and contacting close contacts anymore, we will let parents know if there is a positive case in your child's class/year group. We will send you a template letter from Public Health England which will contain advice on what to do next. However, children who are close contacts do NOT need to isolate and should be in school. We won't be contacting parents if there are just 'close contacts' identified in your class, only positive cases.

Please keep us informed of any COVID related issues or queries.

Pick up and drop off

Drop off and pick up is no longer staggered. Key Stage One should arrive to be collected from the playground by their teacher at 8:40am. Key Stage Two pupils walk to class themselves between 8:40 and 8:45am.

Pick up is 3:10pm from the playground for Key Stage One and 3:20pm for Key Stage Two from the little wooden gate or from the playground.

Learning and the school curriculum

The teachers have been working hard over the summer to plan the new curriculum for their new classes. They have looked carefully at what has been covered last year, what some of the gaps might be and how best to prioritise the learning and ensure any gaps are filled.

Your child will be taught the full curriculum next year. The teachers are skilled at checking that any necessary prior learning is in place before teaching any new content.

There will be some 'catch-up' teaching happening in school. Please don't be alarmed if your child says that they have had some catch-up lessons. Remember how much their learning has been disrupted over the last eighteen months!

Statutory assessments (Phonics screenings, Year 2 SATs, Year 6 SATs and Year 4 times tables check) will be carried out this academic year. Your child's teacher will make sure that they are well prepared for any such assessments.

Contact us

If you have any questions or worries about the return to school, please contact the school or your child's teacher. We may not have all the answers as guidance changes regularly but we will keep you updated. Keep an eye on Class Dojo.

